



# Water Pump REPAIR KIT FOR 51065007128 for MAN



[View Details](#)

## Introduction

---

Item Name: Water Pump

Item Number: VD13-MN052

Application: MAN

MOQ: 20pcs

Guarantee: 12 months

Sample: Supported if have stock

## Classification

---

WATER PUMP  
MAN

## Attributes

---

## CROSS REFERENCE

---

OEM	OEM Reference
MAN	51065007128

## APPLICATION

Application	Model
MAN	TGS/TGX

## FACTORY VIEW

## COMPREHENSIVE PRODUCT RANGE

After more than 10 years development, we have more than 1000 products for passenger cars, commercial vehicles, trucks, ships and machinery.



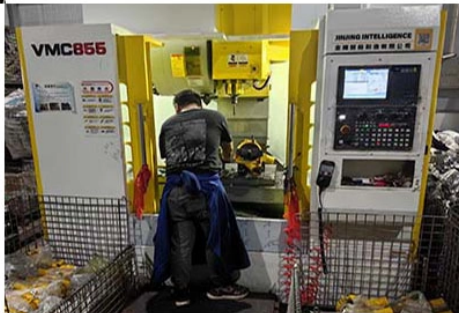
### STRICTLY QUALITY CONTROL IN PRODUCTION PROCESS

- 1.ISO/TS 16949:2009 system is carried out in whole production process
- 2.Using advanced testers to inspect the dimension, material of housings, impellers, flanges, seals, etc. of every batch production
- 3.100% leakage tested and hub-pull tested with high quality standards for every housing and water pump assembly
- 4.Using long life bearings and seals to meet the OE manufacturer quality



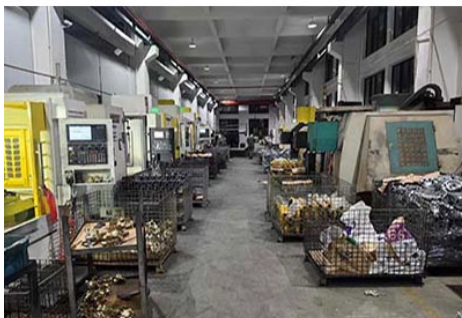
### ADVANCED CNC MACHINES EXCELLENT MANUFACTURE SYSTEM

- 1.Modern CNC machines and advanced designed tools are used widely in our production system.
- 2.The efficient production management is also the key to ensure the excellent manufacture system to offer high quality products and fast delivery.



### OUR ADVANTAGE

- 1.Modern CNC machines and advanced designed tools are used widely in our production system.
- 2.The efficient production management is also the key to ensure the excellent manufacture system to offer high quality products and fast delivery.



### NEW PRODUCTS SAMPLE DEVELOPMENT

- 1.No mold charge and MOQ requirement if sample offered by customer.
- 2.Market protection for new products as the support to customer.
- 3.About 3 months to offer sample for customer confirmation.



## QUALITY CONTROL



### HIGH STANDARD RAW MATERIAL FOR FINAL ASSEMBLY

VIDI always focus on high quality products for our customers.

From the material selection, to quality testing, at least 9 procedures had to be done to make sure the quality.

### KEY COMPONENTS FOR WATER PUMP - BEARING

- 1.Top brand like C&U will be used on our products
- 2.Other brands like SKF if customer needed, we also can offer according to different requirements.



### KEY COMPONENTS FOR WATER PUMP - SEALING

China top brand which same supplier to china domestic OE market.

### KEY COMPONENTS FOR WATER PUMP - SPRING

Spring without heat treatment, not spring steel, with different hardness. The spring plate is used in conjunction to allow silicone oil to flow. Other factory parts may not be able to be opened, the temperature can not drop, and it cannot be cooled. The pull rod will be damaged, causing damage to the engine. For us at least 20000 times of sealing test are required to make sure the quality.



### LEAKAGE TEST FOR BEARING AND SEALING

During the test, each product has individually mold specially designed for the leakage testing.

Stricter on pressure, better quality for products.

- 1.Normal factory pressure standard is 1.5kpa





2. Our standard should be at least 2.6kpa

## PACKING



1



2



3